

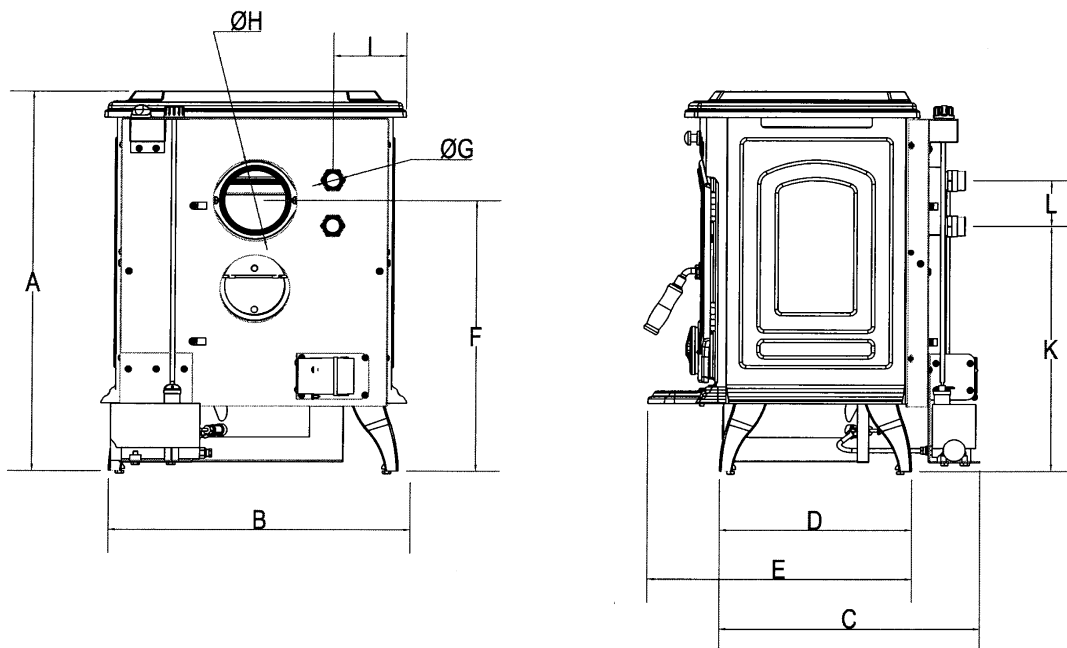
STANLEY

TURNING YOUR HOUSE INTO A HOME

TARA OIL DHW MODEL

Note: This sheet details additional technical & installation information for the Tara oil DHW Stove.

SPECIFICATION



Dimensions	A	B	C	D	E	F	G	H	I	K	L
Metric (mm)	700	520	467	345	473	500	25	127	130	454	83 1/2
Imperial (inches)	27 5/9	20 1/2	18 2/5	13 5/8	18 5/8	19 2/3	1	5	5 1/8	17 7/8	3 1/4

Note: Dimensions stated may be subject to a slight +/- variation

TECHNICAL DATA

Boiler Construction:	3mm S/Steel Grade 304 2B
Test Pressure of Boiler:	40 P.S.I (2.75 Bar)
Operating Temperature Limit:	96° (205°F)
Boiler Capacity:	4 litres
Stove Weight:	102 kgs

All Technical Data are taken under laboratory conditions and may vary in use.

Valve Setting	Oil Consumption	Burner Input	Heat Output to Water
	cc/min	kW (Btu/hr)	kW (Btu/hr)
6	15	8.8 (30,030)	2.98 (10,180)
5	13	7.63 (26,030)	2.67 (9,107)
4	11	6.45 (22,025)	2.25 (7,666)
3	9	5.28 (18,020)	1.68 (5,734)
2	7	4.11 (14,016)	0.93 (3158)
1	5	2.93 (10,010)	0.82 (2790)

The installation should comply with the following, in addition to the regulations listed on page 4:

- * BS 7593: Treatment of Water in Domestic Hot Water Systems.
- * BS 7074: Part 1 & 2 Hot Water Supply.

DOMESTIC HOT WATER SYSTEM

Care should be taken to ensure that the domestic hot water installation is correctly installed and that it complies with all relevant codes of practice. If this appliance is being connected to an existing system, it is strongly recommended to check the following:

- (a) The system is sound.
- (b) The pipe work is adequately insulated.
- (c) Are there any modifications necessary to make the domestic hot water system more efficient.

SAFETY VALVE

A non-adjustable 3 bar safety valve must be fitted to the primary flow pipe adjacent to boiler connection ensuring that any discharge will not create a hazard to occupants or cause damage to electrical components or property.

Only competent personnel should be employed to carry out work on your domestic hot water system.

PIPE FITTINGS

Materials used for installation work should be resistant, sound and should conform to the current editions of the following or their equivalent:

- 1.1 Ferrous Materials.
 - B.S. 4127 : Stainless Steel Tubes
 - B.S. 1387 : Steel Tubes
 - B.S. 1740 : Steel Pipe Fittings
 - B.S. 6956 : Jointing Materials
- 1.2 Non-ferrous Materials
 - EN 29453 : Soft Solder Alloys
 - B.S. 864 : Compression Tube Fittings
 - B.S. 2871 & B.S. EN 1057 Copper and Copper Alloys.

DOMESTIC CYLINDER

We recommend the following when installing these systems:

- * Minimum distance between the stove and the cylinder
- * Pipes & cylinder are lagged
- * Copper or stainless steel 28mm O.D. (1") flow and return pipes
- * Domestic Hot Water Cylinder Capacity 180 litres (40 Gallons). Indirect System should be "finned coil" type to B.S. 1566 & B.S. 699.

PLUMBING CIRCUIT

The gravity circuit consists of the domestic hot water tank of 135 - 180 litres capacity, fixed in an upright position, recommended for hot water storage and it should be connected to the boiler by 25mm (1") ID flow and return piping. The pipes should not exceed 7.8m (25'6") each in length and anything in excess of 4.6m (15ft.) must be fully lagged. The shorter the run of pipe work the more effective the water heating efficiency and to this end, the cylinder should be fully lagged. For safety's sake do not have any valves on this circuit.

Fig.1 **INDIRECT SYSTEM**

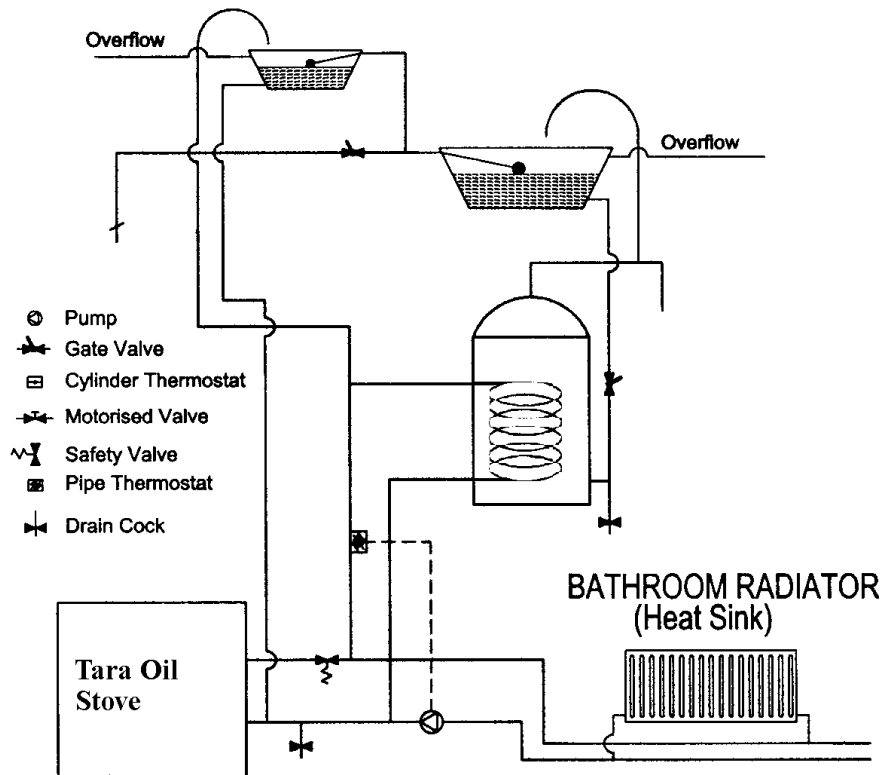
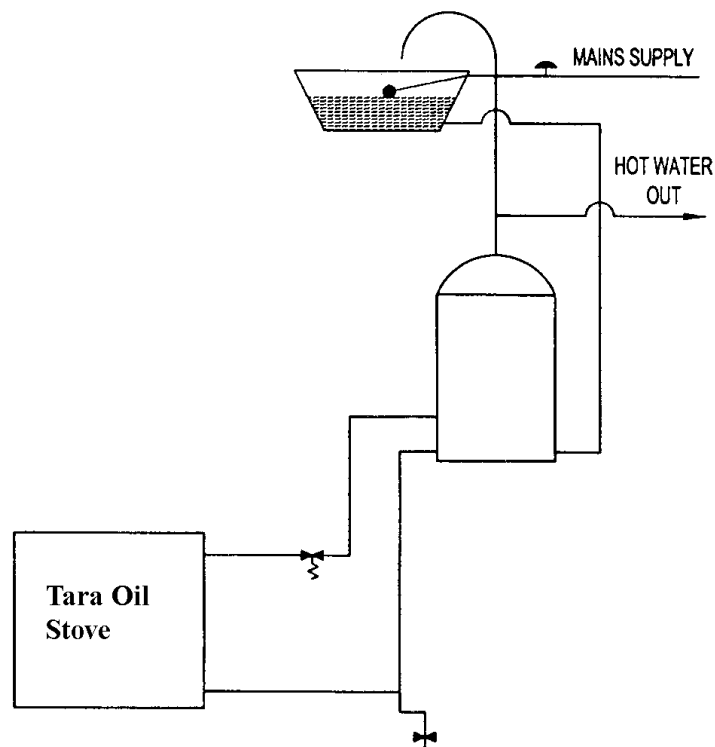


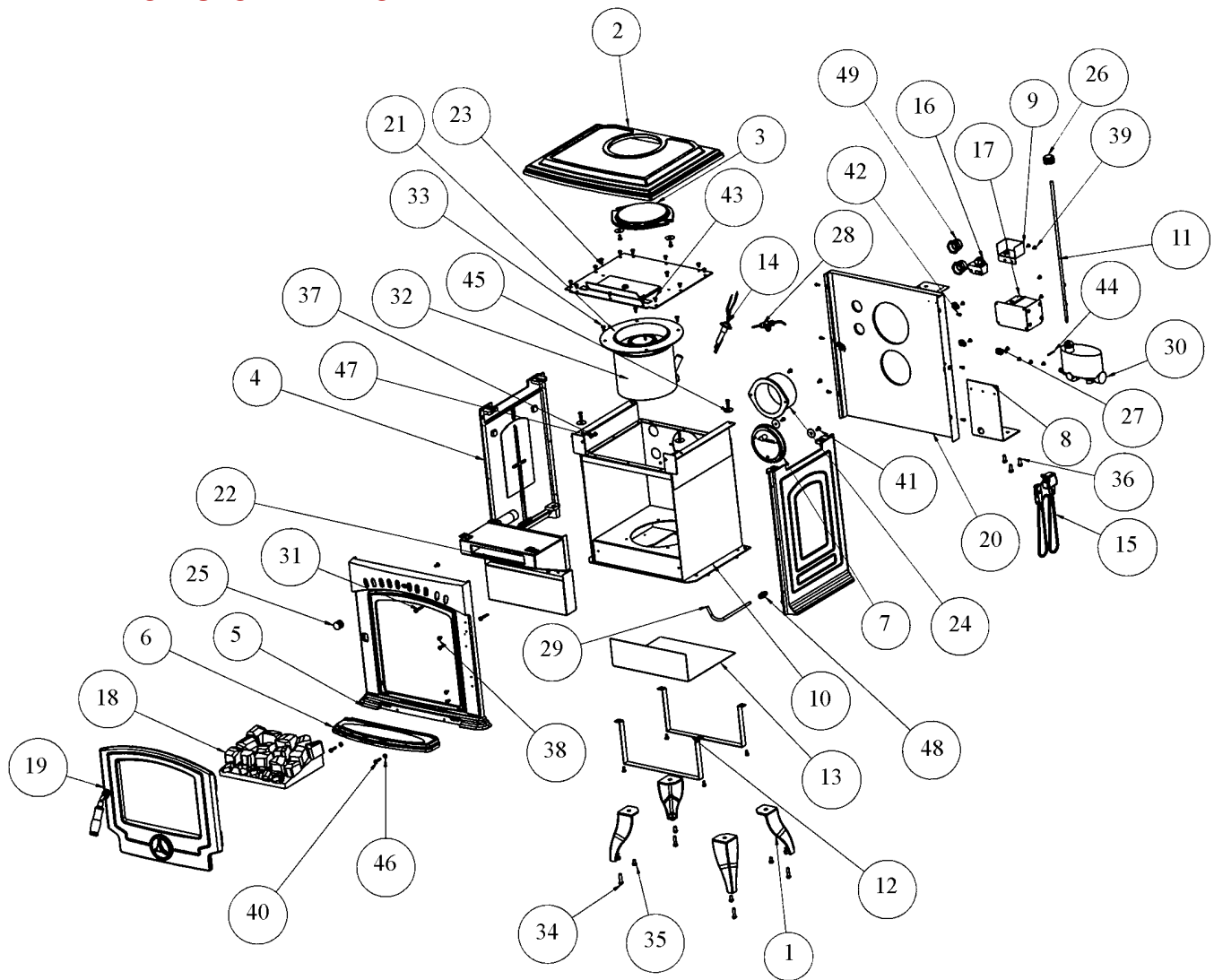
Fig.2 **DIRECT SYSTEM**



INDIRECT SYSTEM ONLY

To off-load excess hot water generated, it may be necessary to install a heat-sink radiator.

TARA DHW OIL STOVE EXPLODED VIEW



- | | |
|-------------------------------------|--------------------------------------|
| 1. Leg | 28. Scrubber |
| 2. Hob | 29. Pipe Dia 8mm |
| 3. Hob Blanking Plate | 30. Oil Valve |
| 4. Side Panel | 31. 1/4" x 1 1/2" Hex Hd |
| 5. Front Panel | 32. 1/4" x 7/8" Hex Hd |
| 6. Ashtray Front | 33. 1/4" x 1/2" Hex Hd |
| 7. 5" Draft Regulator | 34. M8 x 30 Hex Hd |
| 8. Valve Support Bracket | 35. M8 x 14 Hex Hd |
| 9. Cable Protection Box | 36. M8 20 Hex Hd |
| 10. Combustion Chamber | 37. Screw CSK S/C 1/4" x 3/4" |
| 11. Valve Control Rod | 38. Screw CSK Z/P 1/4" x 1/2" |
| 12. Bottom Heat Shield Bracket | 39. Self Tapper Bronze No.10 x M1/2" |
| 13. Bottom Heat Shield | 40. Screw Rd Hd 1/4" x 1" |
| 14. Ignition Probe C/W Leads | 41. Screw CSK Z/P 1/4" x 1/2" |
| 15. Mains Lead | 42. Screw Rd Hd 3/16" x 1/2" |
| 16. Counter Timer with Knob | 43. Screw Rd Hd 1/4" x 3/8" |
| 17. Transformer C/W Leads & Bracket | 44. Pin Split 1/8" x 1" |
| 18. Ceramic Coal Matrix | 45. Washer Flat Mudguard 30 x 8 x 12 |
| 19. Door Assembly | 46. Washer Flat 1/4" |
| 20. Heat Shield Assembly | 47. Washer Shakeproof External 1/4" |
| 21. 8" Burner Pot C/W Support Plate | 48. Fitting Straight 1/4" BSP x 8mm |
| 22. Tara Boiler Assembly | 49. 1" Adaptor |
| 23. Top Plate Assembly | |
| 24. Flue Outlet 125 Diameter | |
| 25. Air Wash Knob | |
| 26. Control Knob | |
| 27. P-Clip (RS 543-361) | |

Waterford Stanley Ltd.,
 Bilberry, Waterford, Ireland.
 Tel: 051-302300
 Fax: 051-302399

STANLEY
 TURNING YOUR HOUSE INTO A HOME