
STANLEY

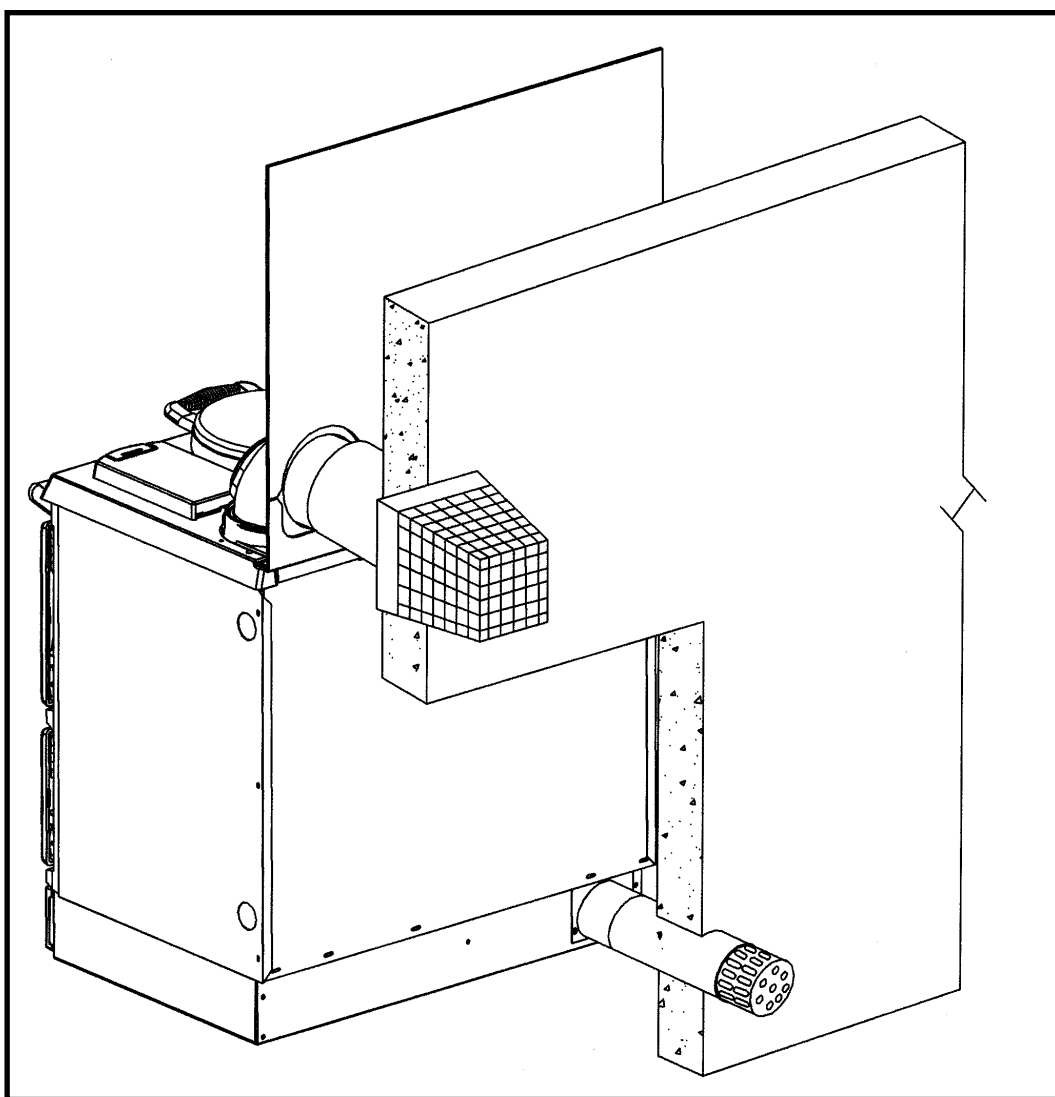
TURNING YOUR HOUSE INTO A HOME

Waterford Stanley Ltd.

Bilberry, Waterford Ireland.

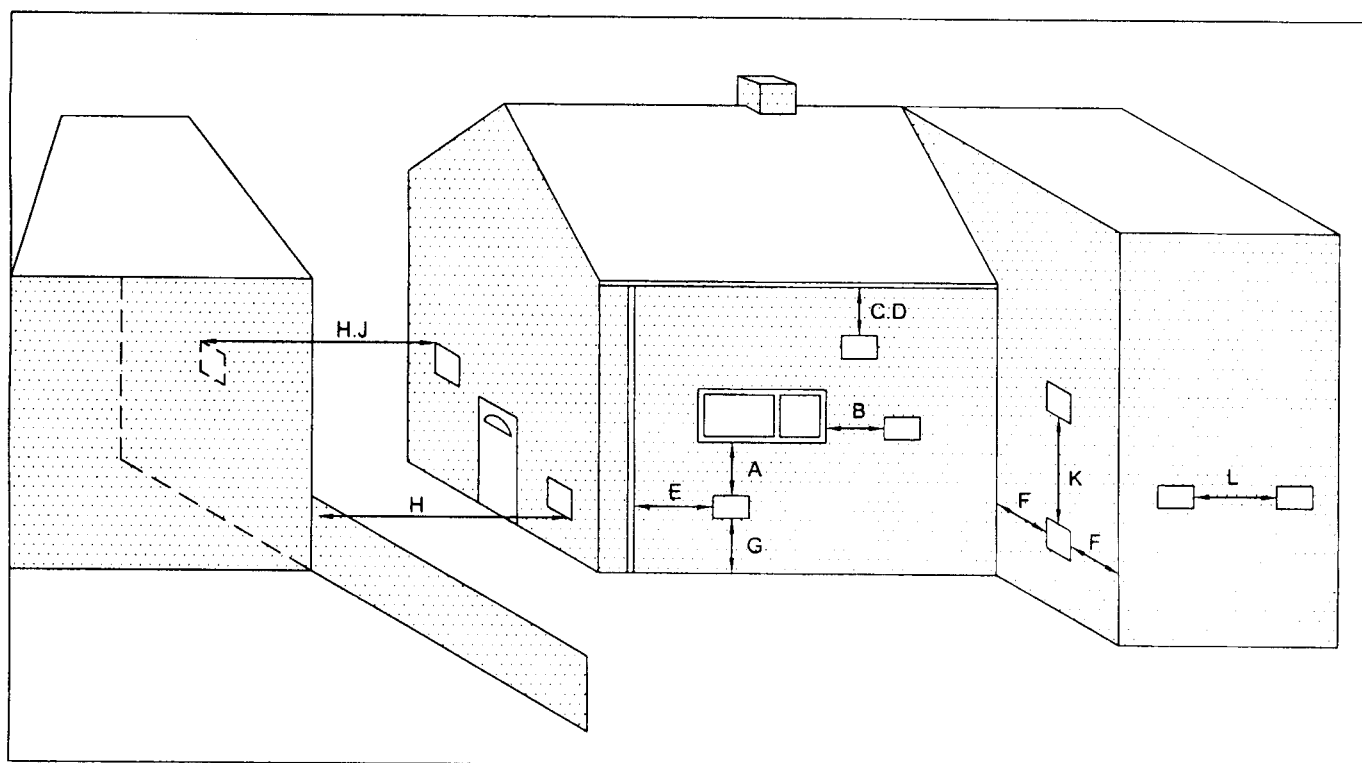
Tel: (051) 302300 Fax: (051) 302375

BRANDON OIL MK3 FAN FLUE KIT



INSTALLATION MANUAL

POSITION OF FAN FLUE TERMINAL FOR OIL FIRED COOKERS



OIL FIRED COOKERS		
A	Directly below an opening, air brick, window etc..	600
B	Horizontally to an opening, air brick, window etc..	600
C	Below a gutter, eaves or balcony with protection	75
D	Below a gutter or a balcony without protection	600
E	From vertical sanitary pipework	300
F	From an internal or external corner	300
G	Above ground or balcony level	300
H	From a surface or boundary facing the terminal	600
J	From a terminal facing the terminal	1200
K	Vertically from a terminal on the same wall	1500
L	Horizontally from a terminal on the same wall	750

Refer to part of the Building Regulations England and Wales, Irish Building Regulations. B.S. 5410 Part 1, and Part F of the Building Standards (Scotland) Regulations.

BRANDON FAN FLUE KIT ASSEMBLY AND INSTALLATION

SEE LIST OF CONTENTS WHEN ITEM NUMBERS ARE REFERRED TO:

STEP 1.

- (a) Remove the cover plate from the Air inlet back panel by removing the fixing screws. (Fig. 1).

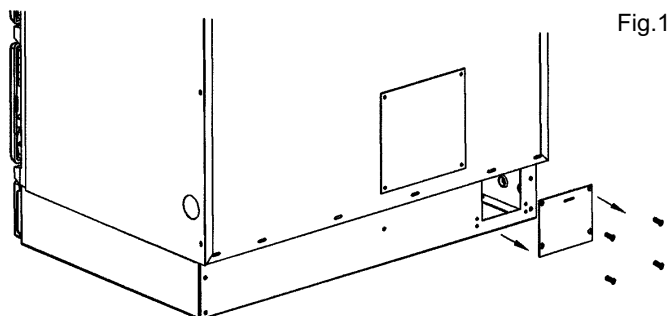


Fig.1

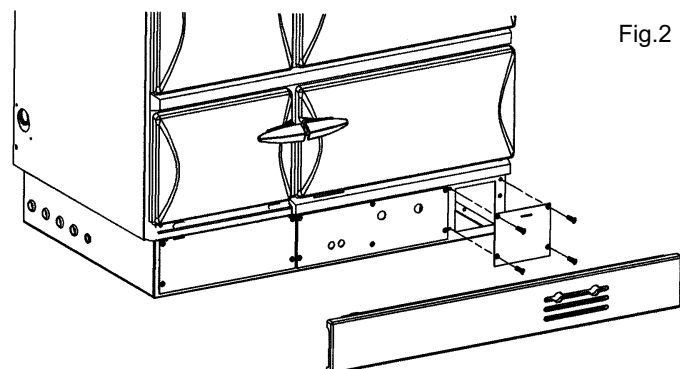


Fig.2

- (b) Remove the plinth on the front of the cooker by sliding it approx 10mm to the left and then pulling it straight out.
- (c) Fit blanking plate over air vent on front right hand side after removing the air inlet plate. (see fig.2).

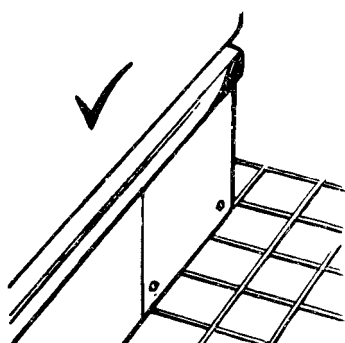


Fig.3

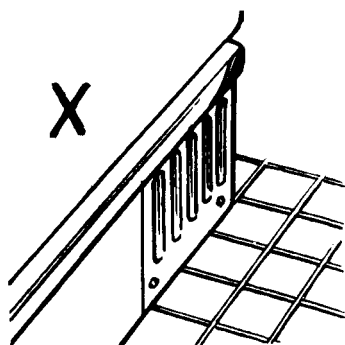


Fig.4

STEP 2.

- (a) Fit the primary air spigot (item 4) to the rear of the base over the opening with the $\frac{1}{4}$ " BSW screws. (See Fig 5)

- (b) Cut the Air inlet duct (item 5) to the required length, allowing for the connection to the cooker, the cooker wall clearance and the air inlet terminal. (item 6).
- (c) Push on Air inlet duct (item 5.) over the primary air spigot (item 4) and secure using one of the jubilee clips. (item 7.)

STEP 3.

- (a) Make two openings through the wall, one a 150mm (6") and one 250mm (10") diameter, where the cooker is to be located. The 150mm (6") opening is for the primary air inlet duct. The 250mm (10") is for the fan flue terminal assembly. See (fig. 5) for fixing centres.

STEP 4.

- (a) Position cooker against wall allowing for the minimum clearance. (See cooker clearances in Installation & Commissioning manual).

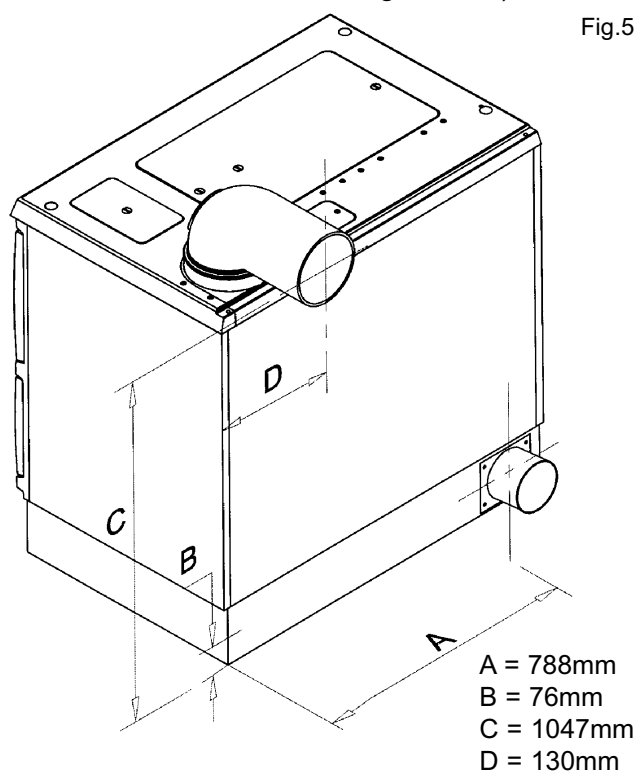


Fig.5

STEP 5.

- (a) Fit cast iron bend to cooker hob.
- (b) Connect the fan flue terminal assembly (item 1.) to the cast iron bend.
- (c) Make sure that all joints are tight and fully secured.
- (d) Seal the primary air inlet duct and fan flue terminal to wall, using either an approved refractory or suitable fire cement.

STEP 6.

- (a) Connect the air inlet terminal (item 6.) to the flexible duct (item 5.) and secure using remaining jubilee clip (item 7).
- (b) Screw the (item 3) terminal guard fixing brackets to the wall and bolt terminal wire guard (item 2.) to the brackets.

STEP 7.

IMPORTANT:

All electrical connections and wiring should only be carried out by competent persons.

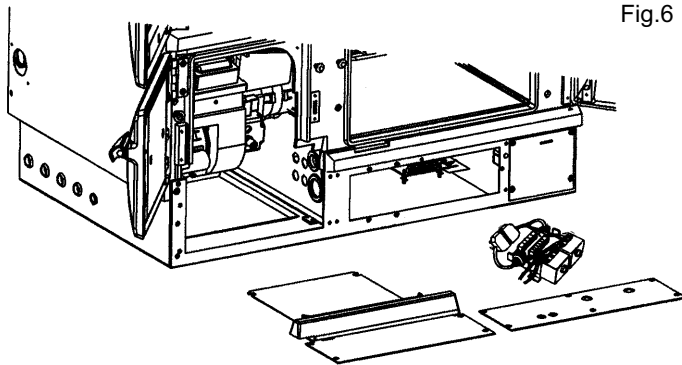


Fig.6

STEP 8

Fit the junction box (item 10) to the wall externally adjacent to the appliance positioned internally and pass electrical cable through the wall, then pass through panel on left hand side of the cooker and connect into side of the cooker and connect into appliance (see wiring diagram) (item 9).

STEP 9

Fit bottom plinth/panel to cooker.

STEP 10

- (a) Check that all fastenings and joints are tight, fully secured and sound.
- (b) Check the correct cooker clearances and terminal locations are adhered to.

STEP 11

When commissioning the cooker check the negative pressure in the flue at the elbow and adjust the slide (See Fig.8) to obtain .75mm (0.03" w.g.) minimum. To reduce the readings open the slide and to increase close. A draught reading of between .75mm 0.03" w.g. and 1.25mm 0.05" w.g. should be achieved with both burners running. Ensure that the pressure switch operates correctly.

CONNECTION OF FAN FLUE TO COOKER

- (a) Isolate from mains before carrying out any work.
- (b) Remove both control boxes (boiler and oven) by undoing the clips on each side of the control box (Landis & Gyr)
- (c) Feed fan flue wiring in to the base of the cooker through the panel on the left hand side. Then feed wiring through a panel in the divider plate until sufficient wire is there to connect to the control box and PCB. Connect wiring using the appropriate wiring diagram.

CONNECTION: OIL BOILER CONTROL BOX (Landis & Gyr)

- (a) Remove the red wire from terminal 1 and connect one of the red wires from the Fan Flue Assembly into terminal 1.
- (b) Connect the red wire removed from terminal 1 and the remaining red wire from the Fan Flue Assembly together using the connector 32 on the control box base. (See fig.8)

OIL OVEN CONTROL BOX (Landis & Gyr)

- (a) Remove the yellow wire from terminal 1 and connect one of the yellow wires from the Fan Flue Assembly into terminal 1.
- (b) Connect the yellow wire removed from terminal 1 and the remaining yellow wire from the Fan Flue Assembly together using the connector 32 on the control box base. (See fig.8)

CONNECTION TO THE PCB

The green wire which is the main live to the fan flue is connected to terminal 10 on the PCB.

The blue wire (neutral) is connected to an available terminal marked neutral.

The green/yellow (earth) is connected to the earth terminal block.

NON STANDARD WALL THICKNESS

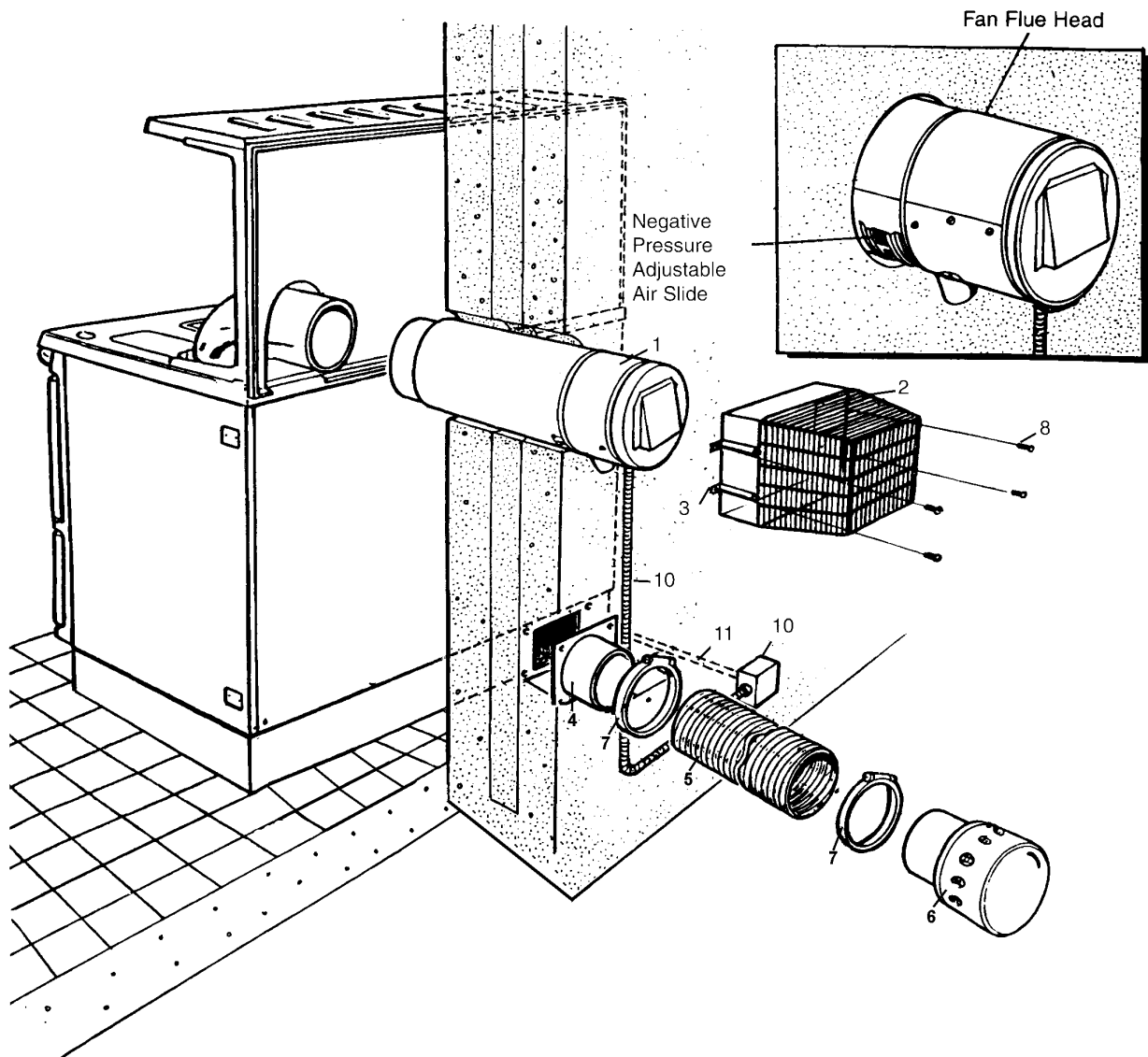
There is an extended flue assembly available (to order) that is suitable to be installed through wall thickness of 368mm (14.5") 444mm (17.5") 495mm (19.5") and a maximum of 558 (22").

To reduce the length of the assembly from the maximum of 550 (22") wall thickness, undo the band retaining the end reducer and remove the reducer

taking care that no damage occurs. Select the thickness required and cut through the assembly on the inner most of the paired grooves. Care must be taken to cut straight and to remove all sharp edges. Place the reducer in position at the inner most end of the flue assembly and fix into position by re-locating the band on the remaining groove and lock into place.

Install the air duct as normal cutting the flexible liner to the correct length in accordance with the wall thickness.

Fig.7



CONTENTS OF KIT:

1. Fan flue terminal.
2. Terminal Guard.
3. Fixing Brackets.
4. Primary air inlet spigot.
5. Air inlet duct.
6. Air Inlet terminal.
7. Jubilee clips.
8. M6 Nuts and Bolts (4 No)
10. Junction box and flexible cable tubing.
11. Burner connection cable.

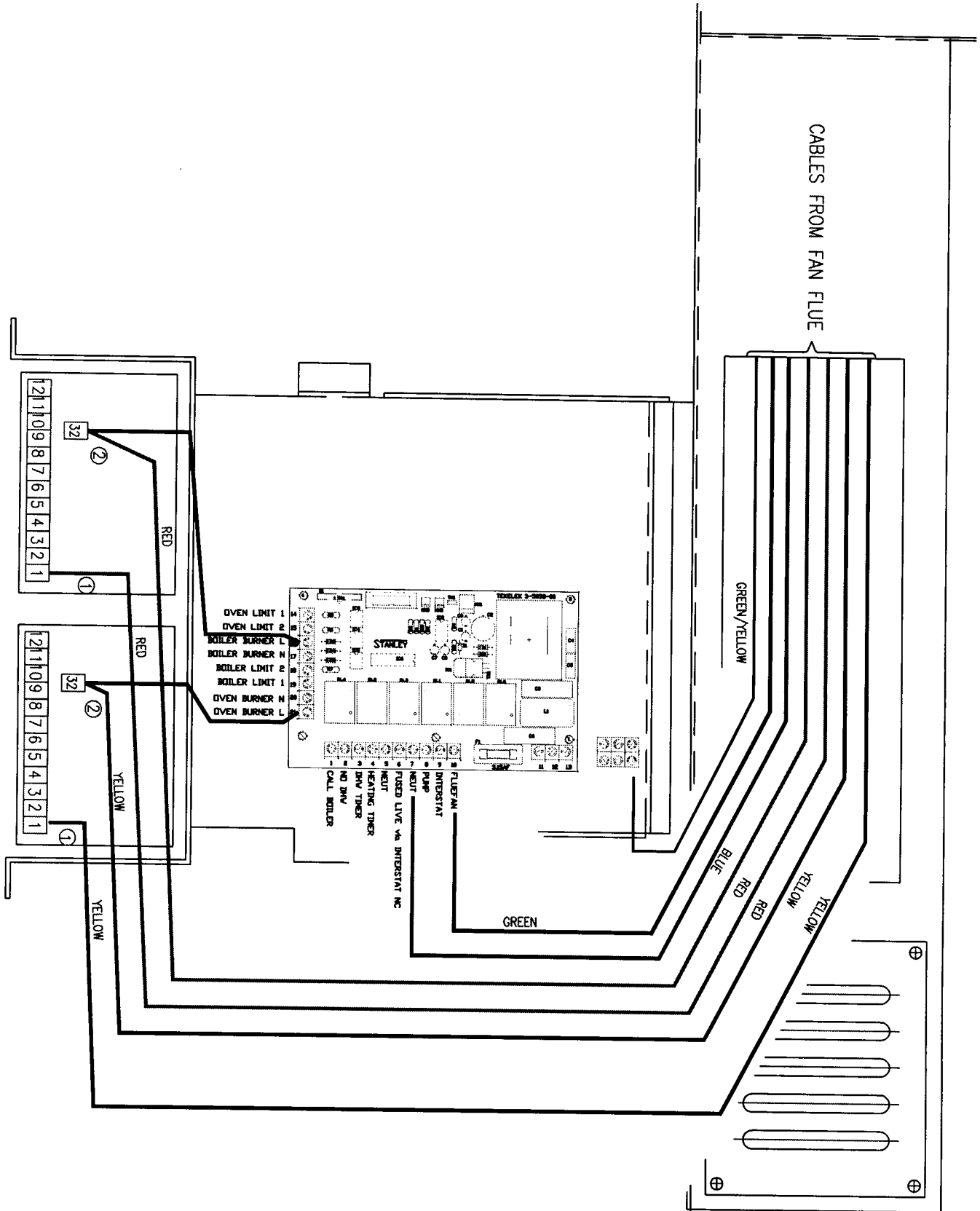
NOTE: The fan flue assembly is suitable for a 275mm (11") wall and cannot be reduced, or extended if it is installed through a wall less than 275mm (11") the terminal will protrude accordingly and must have fitted a suitable terminal guard.

IMPORTANT.

Fan Flue Terminal Kit is **NOT** to be connected to an appliance burning 35 Sec. class D fuel.

BRANDON FAN FLUE OIL WIRING DIAGRAM

Fig.8



Waterford Stanley Ltd,
Bilberry, Waterford, Ireland.
Telephone: (051) 302300
Facsimile: (051) 302375

